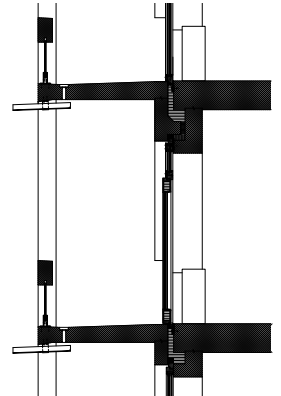
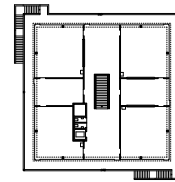
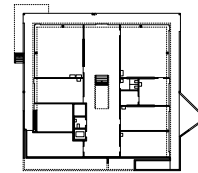
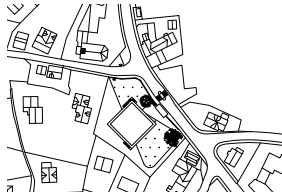
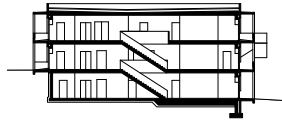
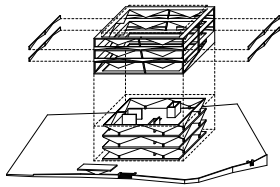
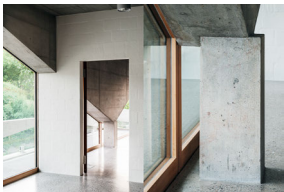




Simple rules and specific exceptions in combination with the decision to use in-situ concrete as the load-bearing and visible material gives the new school building an unexpected lightness. This particular characteristic, rarely explored in reinforced concrete, is all the more inspiring because it combines the architecture, the construction and material to form a unity, which rather than being closed, opens up to the world in many unanticipated ways. The exterior is an articulated façade that, united with the internal structure, supports the weight of the concrete slabs. Both carry structural loads and are interconnected.



**PRIMARY SCHOOL THAL  
SWITZERLAND**

**ADA**  
Angela Deuber  
Architects