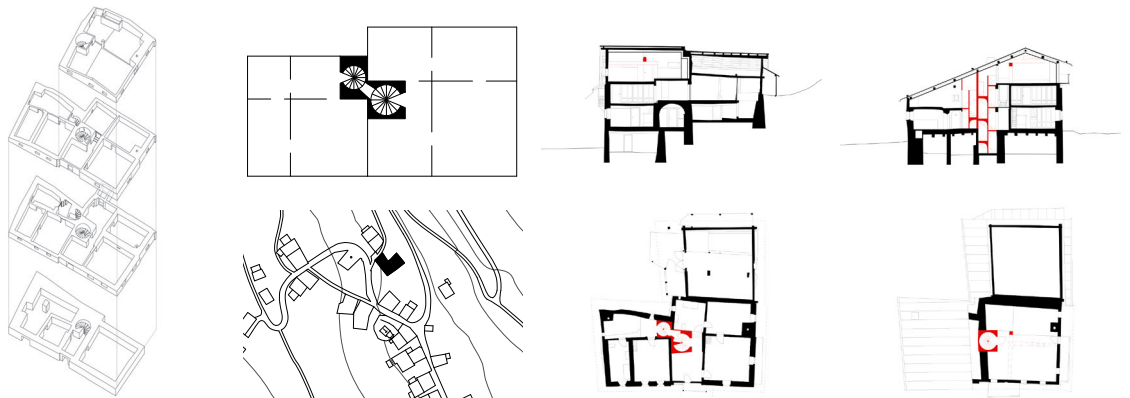




A radical modernisation of the 'medieval' found high up in the Albula Valley sits hardly legible in a historical house in the hamlet of Stuls. The proposal presents a geometrically refined and multi-layered interconnection of spaces. The simple historical four-room structure is straightforward conceptually but labyrinthine in reality. It's this quality that is strengthened with precise and meaningful interventions to create a distinct unity. The renovation of this listed building proves that radical and consequential thinking can strengthen even the most time-honoured buildings.



**MEDIEVAL HOUSE STULS
SWITZERLAND**