

8 WORKS

In this book, Angela Deuber presents 8 Works from 2010 until 2018 which translate physical presence and spatial infinity into architecture

The works have been presented as large scale plates (1.90 m x 1.50 m) at "La Biennale di Venezia" in 2018

Angela Deuber: 8 Works, Chur, Switzerland, 2018
Edition of 50 copies in English

CHF 230.00 (CH) / CHF 260.00 (EU) /
CHF 280.00 (non EU) including shipping

Bound by hand and printed on archival paper
(22 x 31 cm, 56 pages)

8 Works

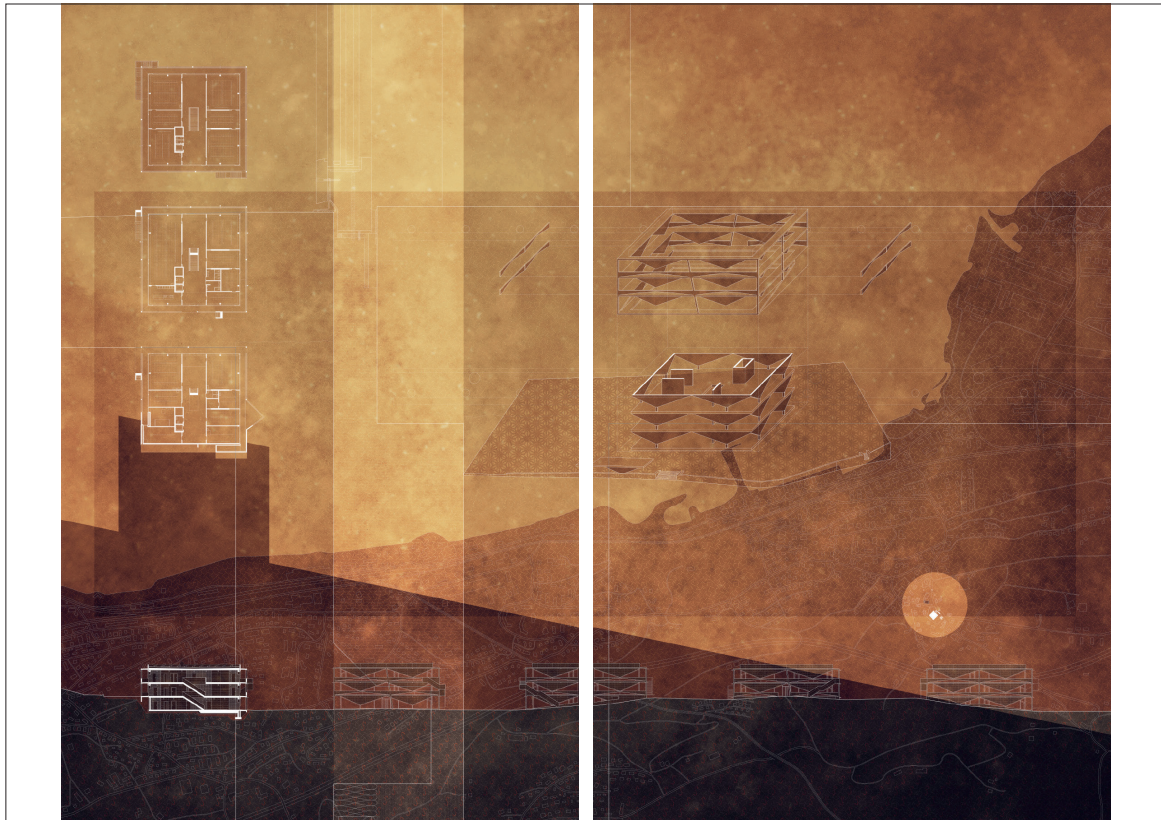
- 1 / School in Thal, Switzerland, 2009 – 2013
- 2 / House on the Hebridean Island, UK, 2013 – 2016
- 3 / Private house in Thusis, Switzerland, 2016 – 2018
- 4 / Conversion of a medieval house in Stuls, Switzerland, 2009 – 2011
- 5 / Museum in Frohnau, Germany, 2016
- 6 / Palazzo del Cinema di Locarno, Switzerland, 2012
- 7 / Multipurpose hall, Seefeld, Switzerland, 2012
- 8 / Swiss embassy in Nairobi, Kenya, 2011

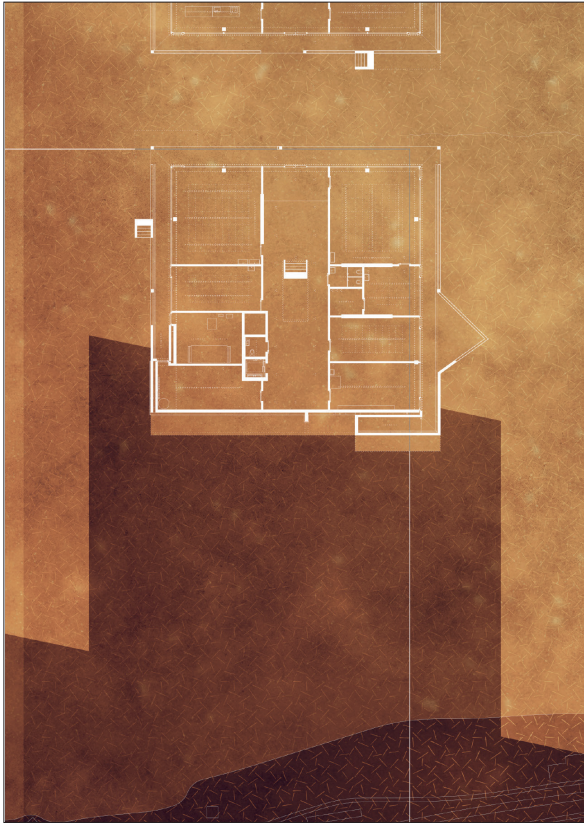
School in Thal

Together with the existing church, the school in Thal forms the center of the village. It stands in the middle of a uniformly sloping plot whose incline adjusts each of the elevations independently. The plot is divided diagonally into an orchard on the lower slope and a paved area on the upper. Seen from the road, the new primary school and kindergarten sits in a green landscape accessible from the street via steps or the natural rise of the site.

The structure consists of a column and slab system split by the fissure created for insulation. The exterior expression is an articulated façade that, united with the internal structure, supports the weight of the concrete slabs. Both carry structural loads and are constructional interdependent. The classrooms are divided by non-structural slurred clay block walls, which can be removed according to the school's future requirements.

The light grey concrete façade has a strong physical presence. Supported by stout internal columns, exaggerated lintels open up toward the corners and middle of the structural floor slabs where Larch window frames are allowed to reach the full height of the room. The thickness of the wall, and the triangular geometry of the openings, produces a spatial experience that is modulated according to one's position in the building; the interiority in the center is relieved nearing the edge allowing the view to dissolve into the open.





ANGELA DEUBER ARCHITECT, 8 Works

This booklet shows 8 buildings and projects (2010 until 2018), where physical presence and spatial infinity are translated into architecture.

The plates (1.50 m x 1.50 m) are from „La Biennale di Venezia“ 2018, *Physical Presence*.

Project Team ADA: Camilla Pisani, Hirona Tsuchiya, Julia Minnig, Mai Wakita, Marigna Zinsli, David Hagberg, Fabio Guell, Guido Porta, Julius Henkel, Thomas Rainey

Images: ADA / Schaub Stierli Fotografie

© ADA / Mai 2018 / www.angelaheber.com