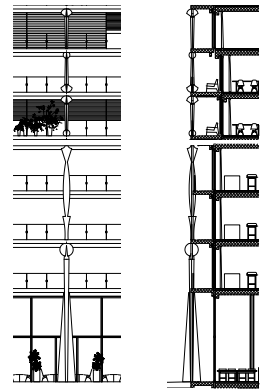
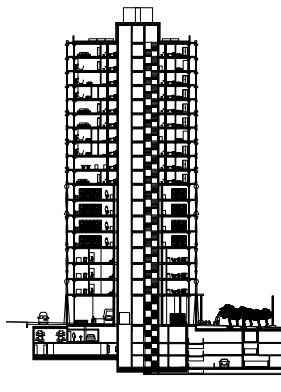
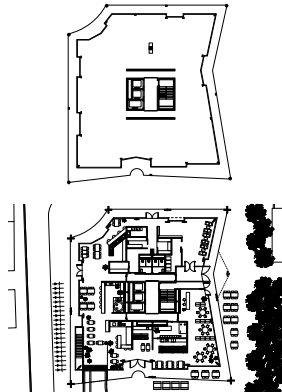
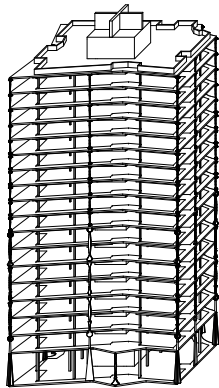




The tower is an elegant architectonic invention. It is experienced as an infrastructural order of airy baldachins, stacked on top of each other. The bending lines of the façade, in the slightly concave gestures, create a series of dynamically alternating public spaces between the building and the city. The unusual architectural figures of columns and the gestures of open verandas wilfully disturb the grand narratives of today's European high-rise architecture. What this project shows is that it is important to conceive architecture through working with an incredible richness of architectural elements.



**TOWER BADEN
SWITZERLAND**

ADA
Angela Deuber
Architects