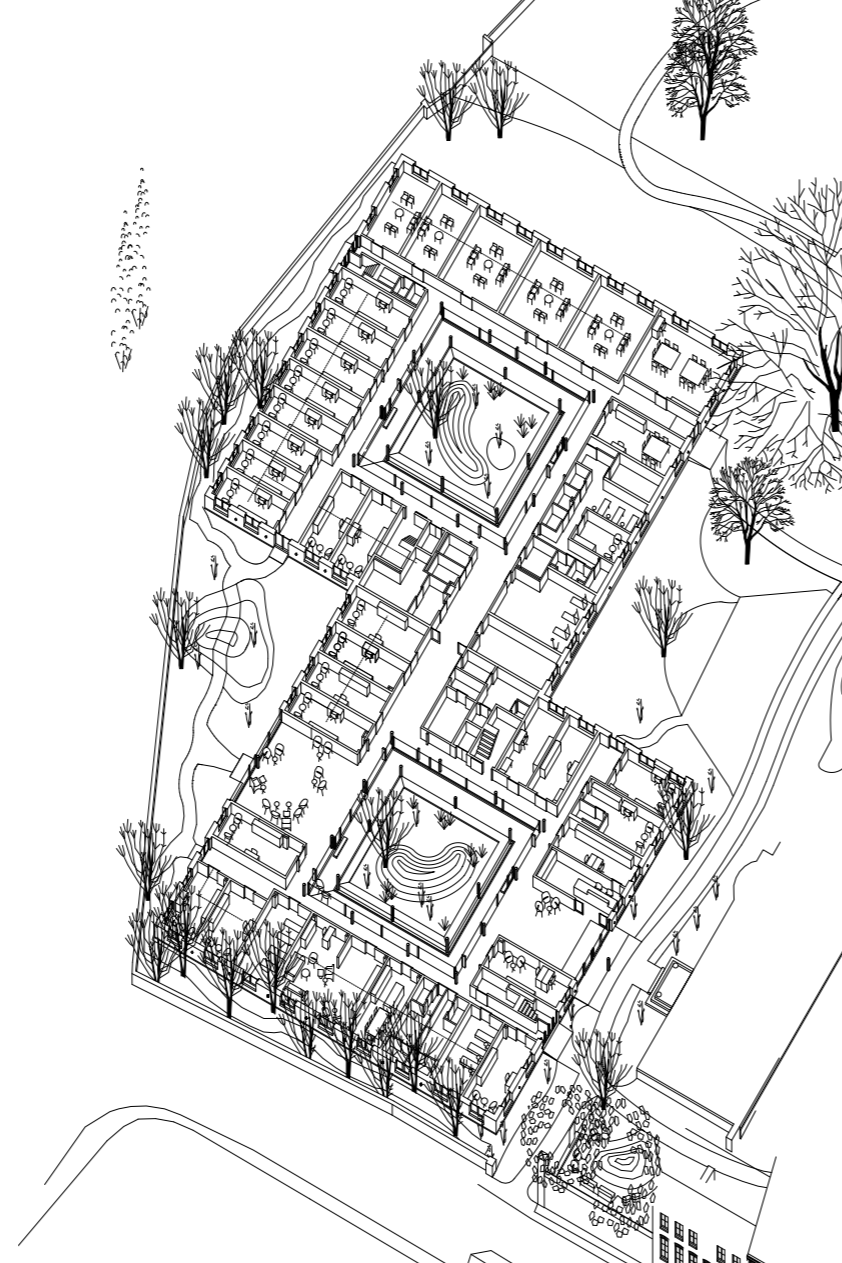


Axonometric Site Plan



Axonometric Floor Plan with Gardens, House with Double-Patio



Opening



Beneath the branches of the 120-year-old copper beech



Signage, Close-up of room sign



Blooming, Garden Northern Courtyard



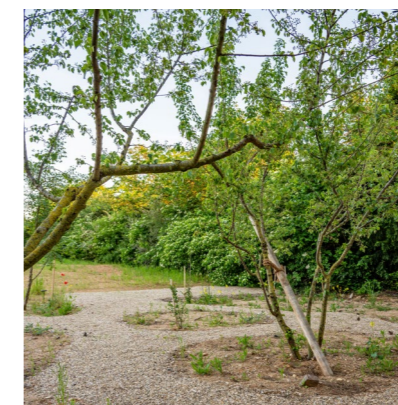
Forest edge atmosphere, Restaurant Terrace



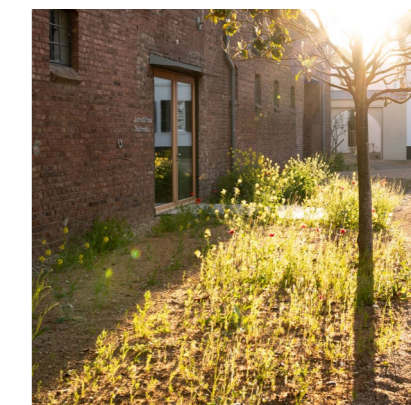
Wildflower meadow in a light breeze, Courtyard Remises



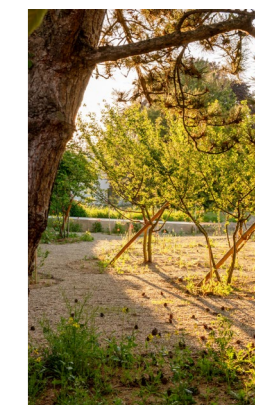
Replacement & continued wall



Hidden corner of the garden, Restaurant Terrace



Sunrise over the butterfly garden, Courtyard Remises



Terrace nestled in greenery

CONTINUING THE LIFE OF A WALLED GARDEN | THE ISLANDS

A wildflower meadow not only has a powerful charm, but also plays a vital role in the survival of much of our planet and its animal life. (Pam Lewis)

From the car park, one approaches the entrance. A brick wall with a wrought-iron gate. The carefully layered material clearly separates inside from outside. Even from the exterior, the walled garden exudes serenity. Only one's own footsteps can be heard on the water-bound surface. And birdsong.

A garden reveals itself as a hortus conclusus, an enclosed space with a meditative, intimate atmosphere – a tranquil, almost paradisiacal environment that offers retreat and protection, inviting one to linger and reflect.

Individual buildings are enclosed – the existing structures of a former manor and a replacement building – which, between themselves and the wall, open up various outdoor spaces and define differentiated garden worlds. The spatial hierarchy of buildings and garden appears inverted: the garden takes precedence, becoming the primary space that flows through the entire complex, lending it aesthetic – that is, sensorially perceptible – spatial qualities, and is merely punctuated by the buildings it contains.

Prof. Dr. Marion Kalmer

Program	Psychosomatic clinic
Building type	Care and health
Period	2020 – 2026
Plot Area, Buildings	1.7 hectares, 7 buildings
Energy concept	Building standard 40 EE, fully renewable
Client	Oberberg Somnia Specialist Clinic / Schöddershof GmbH & Co. KG
Architecture	Angela Deuber Architects AG, Zurich, Angela Deuber, Elena Miegel, Fabio Gsell, Luca Freientsehner, Leo Filser, Maja Malmcrona, Juliana Furrer
Planning	Ganter Architekten Gesellschaft für Architektur mbH, Berlin, Florian Beckmüller, Tamina Mund-Heller
Supervision	Luxraum Architekten Partnerschaft mbB, Cologne, Holger Weber
Developer	HQ CH Developments GmbH, Zurich, Christoph Hett
Structural design / Energy efficiency	Ferrari Gartmann AG, Chur, Patrick Gartmann / LWP Tragwerksplanung GmbH, Dortmund, Dirk Wittler, Jan Krebs, Naseer Hamidi
Contractor	nesseler bau gmbh, Aachen, Thorsten Heck, Jan-Moritz Nauheim